

# Cam, Cabinet & Switch Locks

FEATURES	Medeco <sup>3</sup>	Logic	Medeco XT
Easily integrated into existing cam lock master key systems	●	●	●
Easy installation	●	●	●
Completely serviceable and may be rekeyed in the event of a lost or stolen key	●	●	●
UL437 Listing on cylinder for high security	●		
Cam locks available in all standard lengths, flats, and rotations	●	●	●
Switch locks available in single or double switch models and momentary and maintained positions with silver or gold contacts (for low amperage applications) designed to accept quick connect leads	●	●	●

### Medeco<sup>3</sup> Premium High Security

For effective mechanical protection against most forms of attack as well as protection against unauthorized duplicate keys, Medeco<sup>3</sup> cylinders are recommended. Security features including hardened steel components, pins that must be elevated, rotated, and interact with both a sidebar and a slider, and additional pick resistant features make Medeco<sup>3</sup> the cylinder of choice to protect people, property and information.

### Loss & Liability Control

Many of the cylinders in this section are also available with an eCylinder Loss & Liability Control Solution. See the eCylinder Section for more details.

# Cam Locks

Medeco® high security cam locks are recognized throughout the world as the standard for protection in a 3/4 inch diameter lock. Medeco® Cam Locks utilize hardened, stainless steel inserts throughout the cylinder to provide the ultimate defense against drilling, pulling, and other forms of vandal attacks. Patented key control programs prevent the unauthorized duplication of keys and maintain system integrity. Keyed alike, keyed different, or master keyed, Medeco® offers a complete line of cam locks in a wide variety of sizes and functions to meet your specific needs.



## Benefits:

- All Medeco® cylinders are constructed of durable machined brass components.
- Hardened stainless steel inserts inside the cylinder provide the ultimate defense against drilling and other forms of physical attack.
- Unique elevating and rotating tumbler pin system is virtually pick proof.
- Patented Medeco<sup>3</sup> keys may only be duplicated by Medeco® or an authorized Medeco® service outlet, and only at your request.
- Locks can be keyed alike, keyed different, or master keyed depending on your specific needs.
- Available in various lengths and rotations.

## Technical Information:

- Four or five pin models available depending on size
- Available in three standard sizes, 1 1/16 inch, 7/8 inch and 1 1/8 inch
- Two flat models available, key retaining only
- Clockwise or counterclockwise rotation, 90 or 180 degrees
- Keyed alike, keyed different or master keyed

## Warranty:

Warranted for two (2) years against manufacturer's defects. See the Medeco® limited warranty for full details

## Finishes:

- 26 satin chrome finish standard
- Other finishes available, depending on volume

## Certification:

- UL437 Listed

## Applications:

Medeco® Cam Locks can be used in any standard 3/4 inch diameter application and a multitude of markets including:

- |                  |                   |
|------------------|-------------------|
| • Safe           | • Utility         |
| • Communication  | • Data Encryption |
| • Alarm          | • Cabinet         |
| • Access control | • Transit         |
| • Banking        | • Lockers         |

## Available Key Technologies:

### Mechanical:

- Medeco<sup>3</sup>

### eCylinder:

- Medeco Logic
- Medeco XT

**Medeco<sup>3</sup> All-In-One Cam Lock Kits**

Description	Part Number	Medeco <sup>3</sup>	BiLevel	Medeco X4	eCylinder
7/8" Length 5 Pin Cam Lock Kit	60*0350T-KIT (P)				
	60*0350T-KIT (S)				
1 1/8" Length 5 Pin Cam Lock Kit	60*0650T-KIT (P)				
	60*0650T-KIT (S)				
5/8" Length 5 Pin Cam Lock Kit	60*1150T-KIT (P)				
	60*1150T-KIT (S)				
1 1/2" 5 Pin Cam Lock Kit	60*1450T-KIT (P)				
	60*1450T-KIT (S)				

**Medeco X4 Cam Lock Kit**

Description	Part Number	Medeco <sup>3</sup>	BiLevel	Medeco X4	eCylinder
Medeco X4 7 pin cam lock kit with two cams, hex nut, lock washer, mounting washer, and spacer collar.	21*0503-26 (P)				
	21*0503-26 (S)				

*There is a 6 piece minimum order quantity for high security cam locks.*

*All cam lock kits include: CP-040500 pronged washer, CT-A05 flat cam, CT-D05 flat cam, CT-J01 offset cam, CT-H07 offset cam, CP-040451 90 degree stop washer, CP-050060 3/4" - 27 mounting nut and 2 keys.*

*Master keying is not available in a cam lock kit, but may be custom ordered with specific cam locks listed on the following pages.*

\*\*Refer to the eCylinder section for more detail on specific technologies available and pricing. The \* in the part number is replaced with:  
 T = Medeco<sup>3</sup>, S = Medeco<sup>3</sup> Logic, J = Medeco<sup>3</sup> BiLevel, W = Biaxial, V = Medeco Biaxial Logic, K = Medeco KM, N = Medeco X4, C = Medeco Logic,  
 "-" = Original, Z = Medeco Original KW Logic, G = Medeco XT \*\*\*See key section for surcharges for custom coined cut keys or special stamping requirements.  
**Note: (P)** refers to **Pinned** and **(S)** to **Sub-Pinned** at the end of each part string in the price book.

## High Security Cam Locks

Description	Part Number	Medeco <sup>3</sup>	BiLevel	Medeco X4	eCylinder
5 pin, 1 1/16" Camlock	60*0250T (P)				
	60*0250T (S)				
5pin,7/8"Camlock	60*0350T (P)				
	60*0350T (S)				
5pin,1"Camlock	60*0450T (P)				
	60*0450T (S)				
4 pin, 7/8"Camlock	60*0550T (P)				
	60*0550T (S)				
5 pin,1 1/8"Camlock	60*0650T (P)				
	60*0650T (S)				
4 pin, 1 1/16"Camlock	60*0750T (P)				
	60*0750T (S)				
4 pin, 5/8"Camlock	60*0850T (P)				
	60*0850T (S)				
5 pin, 3/4" Camlock	60*0950T (P)				
	60*0950T (S)				
5 pin, 5/8"Camlock	60*1150T (P)				
	60*1150T (S)				
3 pin, 7/16" Camlock	60*1250T (P)				
	60*1250T (S)				
3 pin, 5/8" Camlock	60*1251T (P)				
	60*1251T (S)				
5 pin, 1 1/2" Camlock	60*1450T (P)				
	60*1450T (S)				
5 pin, 2" Camlock	60*1452T (P)				
	60*1452T (S)				

You must specify the operation code to complete the part number. Keys and cams are ordered separately. Standard sizes described, contact Medeco customer service or medeco.com for variations not listed.

There is a 6 piece minimum order quantity for high security cam locks.

## Cam Lock Operation Codes

Description	Part Number
2 flat, 1 Keypull, Clockwise 90 degree	219
2 Flat, 2 Keypull, Clockwise 90 degree	229
2 Flat, 1 Keypull, Counterclockwise 90 degree	239
2 Flat, 2 Keypull, Counterclockwise 90 degree	249
2 Flat, 1 Keypull, Clockwise 180 degree	259
2 Flat, 2 Keypull, Clockwise 180 degree	269
2 Flat, 1 Keypull, Counterclockwise 180 degree	279
2 Flat, 2 Keypull, Counterclockwise 180 degree	289

\*\*Refer to the eCylinder section for more detail on specific technologies available and pricing. The \* in the part number is replaced with:  
T = Medeco<sup>3</sup>, S = Medeco<sup>3</sup> Logic, J = Medeco<sup>3</sup> BiLevel, W = Biaxial, V = Medeco Biaxial Logic, K = Medeco KM, N = Medeco X4, C = Medeco Logic,  
“-” = Original, Z = Medeco Original KW Logic, G = Medeco XT \*\*\*See key section for surcharges for custom coined cut keys or special stamping requirements.  
**Note: (P)** refers to **Pinned** and **(S)** to **Sub-Pinned** at the end of each part string in the price book.

# Removable Core Cam Locks

Medeco® Cam Locks are available with a removable core feature allowing cores to be changed out in seconds, to provide an entirely new keying combination. For applications that may require instantaneous re-keying due to lost or stolen keys, or where periodic re-keying is done as a matter of good business practice, Medeco® Removable Core Cam Locks save valuable time and money. Removable Core Cam Locks offer the same high security features of a Medeco® Cam Lock with the convenience of a removable core.



## Benefits:

- Removable cores can be changed out in seconds to provide a new, secure keying combination.
- All Medeco® cylinders are constructed of durable machined brass components.
- Hardened stainless steel inserts inside the cylinder provide the ultimate defense against drilling and other forms of physical attack.
- Unique elevating and rotating tumbler pin system is virtually pick proof.
- Patented Medeco<sup>3</sup> keys may only be duplicated by Medeco® or an authorized Medeco® service outlet, and only at your request.
- Locks can be keyed alike, keyed different, or master keyed depending on your specific needs.
- Available in various lengths and rotations.

## Technical Information:

- Four or five pin models available depending on size
- Available in three standard sizes, 1 1/16 inch, 7/8 inch and 1 1/8 inch
- Two flat models available, key retaining only
- Clockwise or counterclockwise rotation, 90 or 180 degrees
- Keyed alike, keyed different or master keyed

## Warranty:

Warranted for two (2) years against manufacturer's defects. See the Medeco® limited warranty for full details

## Finishes:

- 26 satin chrome finish standard
- Other finishes available, depending on volume

## Applications:

- Medeco® Removable Core Cam Locks can be used in any standard 3/4 inch diameter application and a multitude of markets including:
  - Safe
  - Communication
  - Alarm
  - Access control
  - Banking
  - Utility
  - Data Encryption
  - Cabinet
  - Transit
  - Lockers

## Available Key Technologies:

### Mechanical:

- Medeco<sup>3</sup>

## High Security Removable Core Cam Locks

Description	Part Number	Medeco <sup>3</sup>	BiLevel	Medeco X4	eCylinder
4 pin, 1 1/16" Removable core camlock	60*7155XT (P)				
	60*7155XT (S)				
4 pin, 7/8" Removable core camlock	60*7255XT (P)				
	60*7255XT (S)				
4 pin, 1 1/8" Removable core camlock	60*7355XT (P)				
	60*7355XT (S)				
5 pin, 1 1/8" Removable core camlock	60*7455XT (P)				
	60*7455XT (S)				
5 pin, 7/8" Removable core camlock	60*7555XT (P)				
	60*7555XT (S)				
Plug for Removable Core Cam Locks. Cam locks are provided with plug, but additional plugs may be ordered separately.	66*391XXX (P)				
	66*391XXX (S)				

Keys may be ordered separately.

## X = Rotation for Removable Core Cam Lock

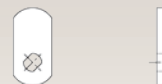
Description	Part Number
90 degree Clockwise	0
90 degree Counter Clockwise	1
180 degree Clockwise	2
180 degree Counter Clockwise	3



## A Series Flat Cams

Description	Part Number
5/8" Flat Cam	CT-A00
3/4" Flat Cam	CT-A01
7/8" Flat Cam	CT-A02
1" Flat Cam	CT-A03
1 1/8" Flat Cam	CT-A04
1 1/4" Flat Cam	CT-A05
1 3/8" Flat Cam	CT-A06
1 1/2" Flat Cam	CT-A07
1 5/8" Flat Cam	CT-A08
1 3/4" Flat Cam	CT-A09
2" Flat Cam	CT-A11
2 1/8" Flat Cam	CT-A12
2 1/4" Flat Cam	CT-A13
2 3/8" Flat Cam	CT-A14
2 1/2" Flat Cam	CT-A15
2 5/8" Flat Cam	CT-A16
3" Flat Cam	CT-A19

\*\*Refer to the eCylinder section for more detail on specific technologies available and pricing. The \* in the part number is replaced with:  
 T = Medeco<sup>3</sup>, S = Medeco<sup>3</sup> Logic, J = Medeco<sup>3</sup> BiLevel, W = Biaxial, V = Medeco Biaxial Logic, K = Medeco KM, N = Medeco X4, C = Medeco Logic,  
 "-." = Original, Z = Medeco Original KW Logic, G = Medeco XT \*\*\*See key section for surcharges for custom coined cut keys or special stamping requirements.  
**Note: (P)** refers to **Pinned** and **(S)** to **Sub-Pinned** at the end of each part string in the price book.



### C Series Flat Cams, 45° Tenon

Description	Part Number
7/8" Flat Cam	CT-C02
1 1/8" Flat Cam	CT-C04
1 1/4" Flat Cam	CT-C05
1 5/8" Flat Cam	CT-C08
1 3/4" Flat Cam	CT-C09
2" Flat Cam	CT-C11



### D Series Flat Cams, Horizontal Tenon

Description	Part Number
5/8" Flat Cam	CT-D00
3/4" Flat Cam	CT-D01
7/8" Flat Cam	CT-D02
1" Flat Cam	CT-D03
1 1/8" Flat Cam	CT-D04
1 1/4" Flat Cam	CT-D05
1 3/8" Flat Cam	CT-D06
1 1/2" Flat Cam	CT-D07
1 5/8" Flat Cam	CT-D08
1 3/4" Flat Cam	CT-D09
2" Flat Cam	CT-D11
2 1/8" Flat Cam	CT-D12
2 1/2" Flat Cam	CT-D15
3" Flat Cam	CT-D19



### H Series Offset Cam, Vertical Tenon

Description	Part Number
1 1/4" Cam with 1/8" offset	CT-H00
1 1/8" Cam with 7/32" offset	CT-H07
1 1/8" Cam with 1/8" offset	CT-H09
1 1/2" Cam with 7/32" offset	CT-H14
1 1/4" Cam with 7/32" offset	CT-H15
1 1/8" Cam with 5/16" offset	CT-H16
1 1/4" Cam with 5/16" offset	CT-H17
1 3/4" Cam with 5/16" offset	CT-H19
2" Cam with 5/16" offset	CT-H20
7/8" Cam with 5/32" offset	CT-H27
1 3/4" Cam with 7/32" offset	CT-H30
1 1/2" Cam with 5/16" offset	CT-H32

\*\*Refer to the eCylinder section for more detail on specific technologies available and pricing. The \* in the part number is replaced with:  
 T = Medeco<sup>3</sup>, S = Medeco<sup>3</sup> Logic, J = Medeco<sup>3</sup> BiLevel, W = Biaxial, V = Medeco Biaxial Logic, K = Medeco KM, N = Medeco X4, C = Medeco Logic,  
 "-" = Original, Z = Medeco Original KW Logic, G = Medeco XT \*\*\*See key section for surcharges for custom coined cut keys or special stamping requirements.  
**Note: (P)** refers to **Pinned** and **(S)** to **Sub-Pinned** at the end of each part string in the price book.



### J Series Offset Cam, Horizontal

Description	Part Number
1 1/8" Cam with 7/32" offset	CT-J01
1" Cam with 1/8" offset	CT-J05
1 1/4" Cam with 1/8" offset	CT-J07
1 5/8" Cam with 1/8" offset	CT-J08
2 1/8" Cam with 1/8" offset	CT-J11
1 1/4" Cam with 7/32" offset	CT-J12
1 1/8" Cam with 5/16" offset	CT-J13
1 1/4" Cam with 5/16" offset	CT-J14
1 5/8" Cam with 5/16" offset	CT-J15
2 1/8" Cam with 5/16" offset	CT-J18
1 1/8" Cam with 5/32" offset	CT-J22
1 1/2" Cam with 5/16" offset	CT-J27
2 1/8" Cam with 7/32" offset	CT-J28
7/8" Cam with 5/32" offset	CT-J29

### 3/4" Removable Plug Lock

Description	Part Number	Medeco <sup>3</sup>	BiLevel	Medeco X4	eCylinder
1 keypull, 3/4" Removable plug lock	64*0250T (P)				
	64*0250T (S)				
2 keypull, 3/4" Removable plug lock	64*0251T (P)				
	64*0251T (S)				

### 1 1/8" Removable Plug Lock

Description	Part Number	Medeco <sup>3</sup>	BiLevel	Medeco X4	eCylinder
1 keypull, vertical flats, flush mount	64*0550T (P)				
	64*0550T (S)				
1 keypull, horizontal flats, flush mount	64*0550AT (P)				
	64*0550AT (S)				
2 keypull, vertical flats, surface mount with tapered bezel	64*0550FT (P)				
	64*0550FT (S)				

Keys are ordered separately.

\*\*Refer to the eCylinder section for more detail on specific technologies available and pricing. The \* in the part number is replaced with:  
 T = Medeco<sup>3</sup>, S = Medeco<sup>3</sup> Logic, J = Medeco<sup>3</sup> BiLevel, W = Biaxial, V = Medeco Biaxial Logic, K = Medeco KM, N = Medeco X4, C = Medeco Logic,  
 "-" = Original, Z = Medeco Original KW Logic, G = Medeco XT \*\*\*See key section for surcharges for custom coined cut keys or special stamping requirements.  
**Note: (P)** refers to **Pinned** and **(S)** to **Sub-Pinned** at the end of each part string in the price book.

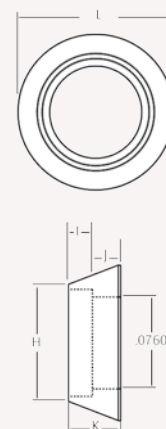


## Security Collars

Description	Part Number
Cam lock security collar	CP-070501
Cam lock security collar	CP-070131
Cam lock security collar	CP-070161
Cam lock security collar	CP-070171
Cam lock security collar	CP-070441
Cam lock security collar	CP-070201
Cam lock security collar	CP-070111
Cam lock security collar	CP-070141
Cam lock security collar	CP-070181
Cam lock security collar	CP-070481

## Security Collars

Part Number	(H)	(I)	(J)	(K)	(L)
CP-070501	1.000"	.142"	.170"	.312"	1.290"
CP-070131	.885"	.142"	.170"	.312"	1.210"
CP-070161	.885"	.188"	.250"	.438"	1.356"
CP-070171	.885"	.200"	.238"	.438"	1.290"
CP-070441	.885"	.260"	.070"	.330"	1.210"
CP-070201	.885"	.262"	.050"	.312"	1.210"
CP-070111	.885"	.278"	.160"	.438"	1.290"
CP-070141	.885"	.325"	.050"	.375"	1.275"
CP-070181	1.000"	.450"	.050"	.500"	1.250"
CP-070481	1.000"	.638"	.050"	.688"	1.313"

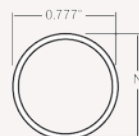


## Spacers

Description	Part Number
Cam lock spacer, obtain specific part number from following dimension chart.	CP-160XXX

## Spacers

Part Number	(M)	(N)
CP-160051	.125"	.875"
CP-160101	.140"	.875"
CP-160071	.188"	.875"
CP-160111	.200"	.875"
CP-160081	.250"	.875"
CP-160091	.275"	.875"
CP-160301	.375"	.875"
CP-160121	.400"	.875"
CP-160061	.530"	.875"
CP-160271	.437"	.875"
CP-160541	.031"	.875"
CP-160551	.062"	.875"
CP-160571	.312"	.875"
CP-160591	.062"	.995"
CP-160601	.125"	.995"
CP-160611	.250"	.995"



\*\*Refer to the eCylinder section for more detail on specific technologies available and pricing. The \* in the part number is replaced with:  
 T = Medeco<sup>3</sup>, S = Medeco<sup>3</sup> Logic, J = Medeco<sup>3</sup> BiLevel, W = Biaxial, V = Medeco Biaxial Logic, K = Medeco KM, N = Medeco X4, C = Medeco Logic,  
 “.” = Original, Z = Medeco Original KW Logic, G = Medeco XT \*\*\*See key section for surcharges for custom coined cut keys or special stamping requirements.  
**Note: (P)** refers to **Pinned** and **(S)** to **Sub-Pinned** at the end of each part string in the price book.

## Pop-Out, T-Handle Cylinder

Description	Part Number	Medeco <sup>3</sup>	BiLevel	Medeco X4	eCylinder
5 pin, zinc deadbolt	64-0155CT (P)				
	64-0155CT (S)				
5 pin, zinc springbolt	64-0155T (P)				
	64-0155T (S)				
4 pin, zinc springbolt	64-0750ET (P)				
	64-0750ET (S)				
4 pin, zinc deadbolt	64-0750GT (P)				
	64-0750GT (S)				
4 pin, steel springbolt	64-0950T (P)				
	64-0950T (S)				
4 pin, steel deadbolt	64-0952T (P)				
	64-0952T (S)				
4 pin, steel springbolt, steel shell	64-1050T (P)				
	64-1050T (S)				
4 pin, steel deadbolt, steel shell	64-1051T (P)				
	64-1051T (S)				

Keys are ordered separately.

\*\*Refer to the eCylinder section for more detail on specific technologies available and pricing. The \* in the part number is replaced with:  
T = Medeco<sup>3</sup>, S = Medeco<sup>3</sup> Logic, J = Medeco<sup>3</sup> BiLevel, W = Biaxial, V = Medeco Biaxial Logic, K = Medeco KM, N = Medeco X4, C = Medeco Logic,  
“-” = Original, Z = Medeco Original KW Logic, G = Medeco XT \*\*\*See key section for surcharges for custom coined cut keys or special stamping requirements.  
**Note: (P)** refers to **Pinned** and **(S)** to **Sub-Pinned** at the end of each part string in the price book.

# Cam Locks

## How to Order Cam & Switch Locks:

### Here are the 2 things you need to know to order cam locks:

1. What's the base part number by determining the length of cam lock needed?
2. What keyway?

### Here are the 3 things you need to know to order switch locks:

1. Do you need a single or double switch?
2. What keyway?
3. What operation code do you need?

To order custom high security cam locks, switch locks, threaded extension locks, or other specialty cylinders:

Go to the cam lock part number configurator at [www.medeco.com](http://www.medeco.com), or contact Customer Service for assistance. **All cam and switch locks (except All N One cam locks) in this section are priced without keys.**

Offering hundreds of cam and cylinder length configurations, Medeco can fit nearly any application requiring a 3/4" diameter lock. Don't see the cam lock you need listed in our product catalog? Call our customer service department – chances are we have the specialty configuration that you need.

Many cam and switch locks are also available. See the e-cylinder section for more information.

There is a 6 pc. minimum order quantity for high security cam locks. Distributors are available with inventory for overnight shipping in quantities less than 6.

**You must specify the operation code and cam to complete the cam lock part number. With the exception of the cam lock kits, Medeco cam locks do not include keys or cams unless specified. Consult Medeco customer service or [www.medeco.com](http://www.medeco.com) for cam lock variations not listed.**

### Cam Lock Operation Codes

2 Flat, 1 Keypull, Clockwise 90° .....	219	2 Flat, 1 Keypull, Clockwise 180° .....	259
2 Flat, 2 Keypull, Clockwise 90° .....	229	2 Flat, 2 Keypull, Clockwise 180° .....	269
2 Flat, 1 Keypull, Counter-clockwise 90° .....	239	2 Flat, 2 Keypull, Counter-clockwise 180° .....	279
2 Flat, 2 Keypull, Counter-clockwise 90° .....	249	2 Flat, 1 Keypull, Counter-clockwise 180° .....	289

**You must specify the rotation and cam to complete the removable core cam lock part number. With the exception of the cam lock kits, Medeco cam locks do not include keys or cams unless specified. Consult Medeco customer service or [www.medeco.com](http://www.medeco.com) for variations not listed.**

X = Rotation for Removable Core Cam Locks

0 = 90° Clockwise

1 = 90° Counter-clockwise

2 = 180° Clockwise

3 = 180° Counter-clockwise